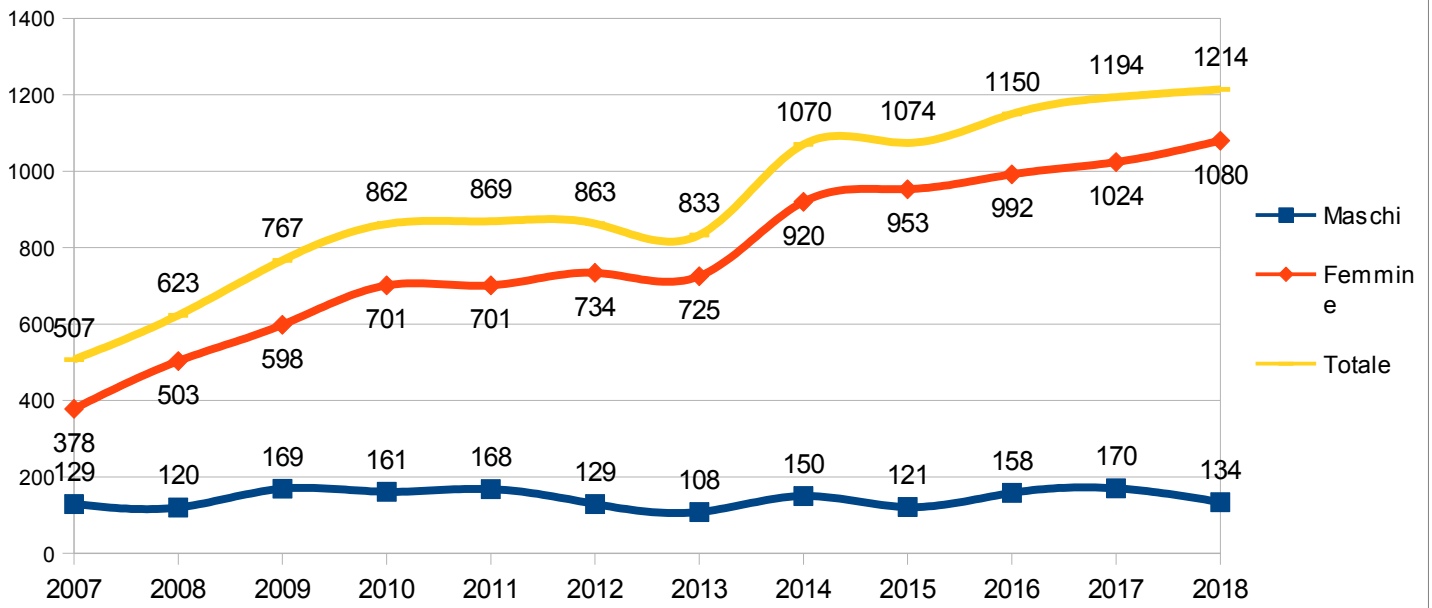
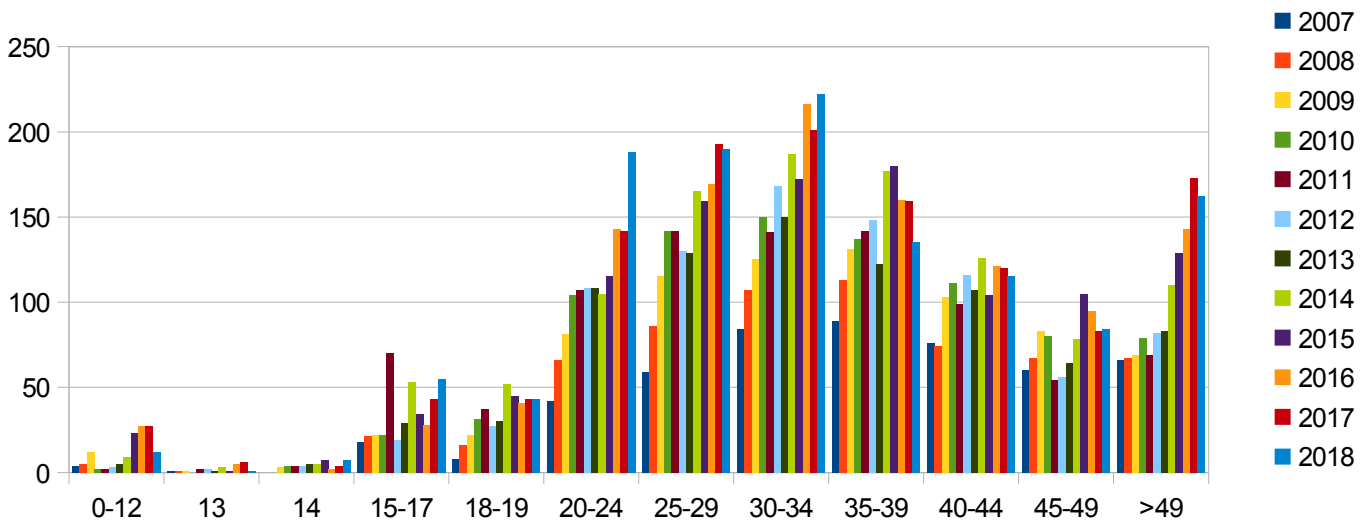


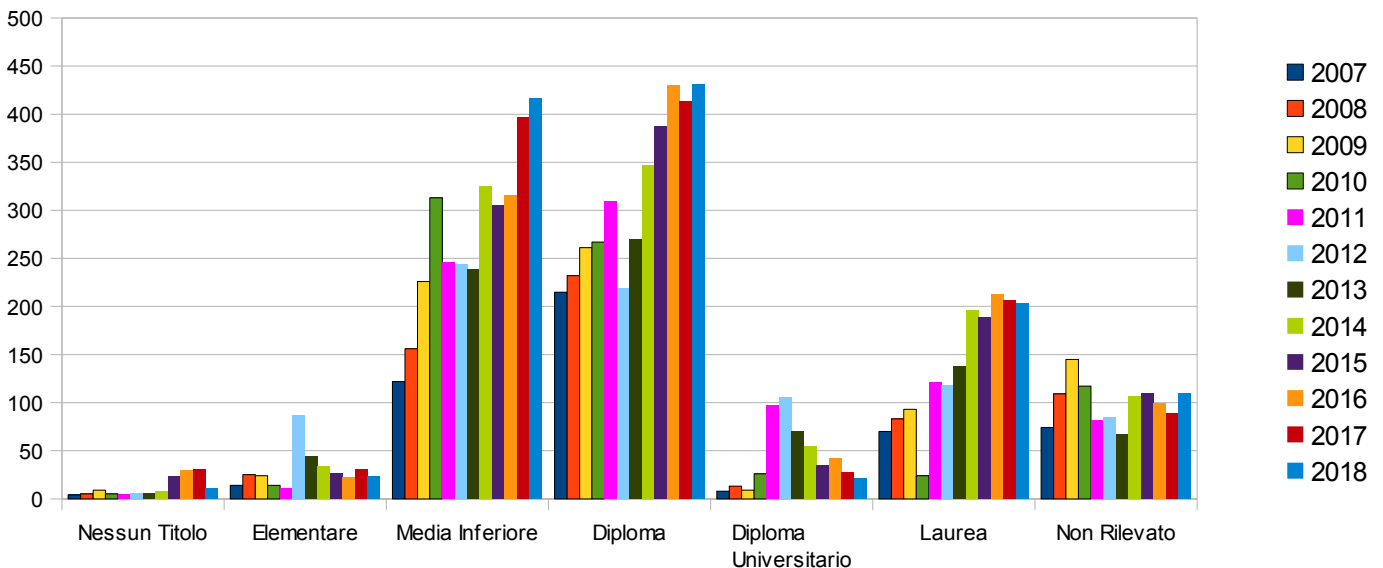
Utenza Complessiva



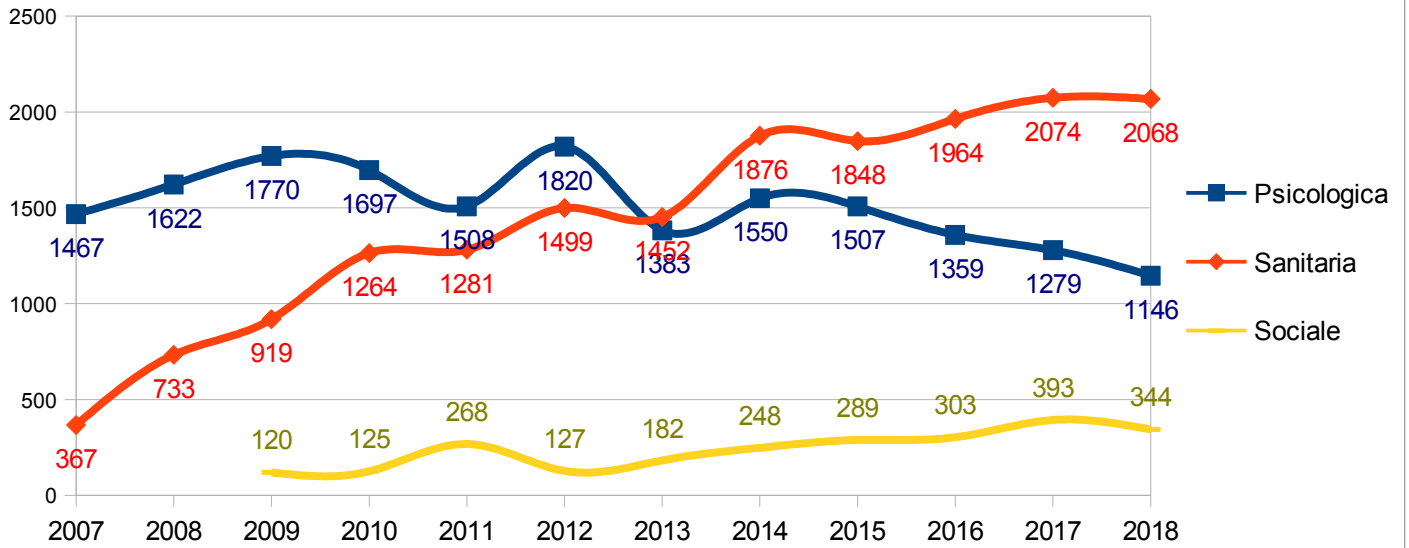
Classi di età



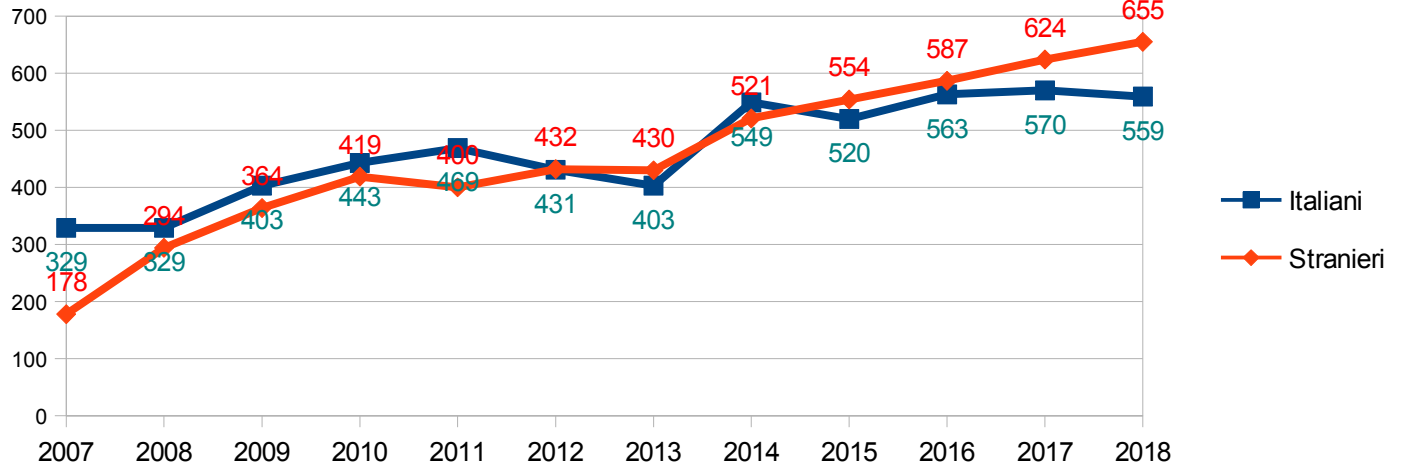
Titolo di studio



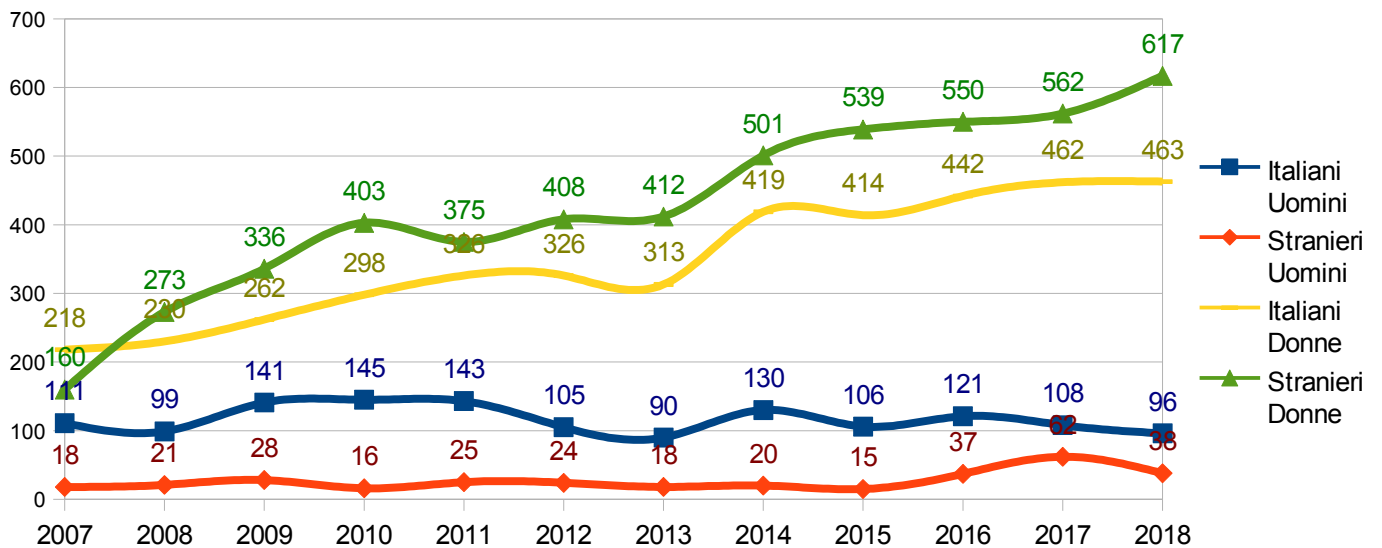
Quantità Prestazioni



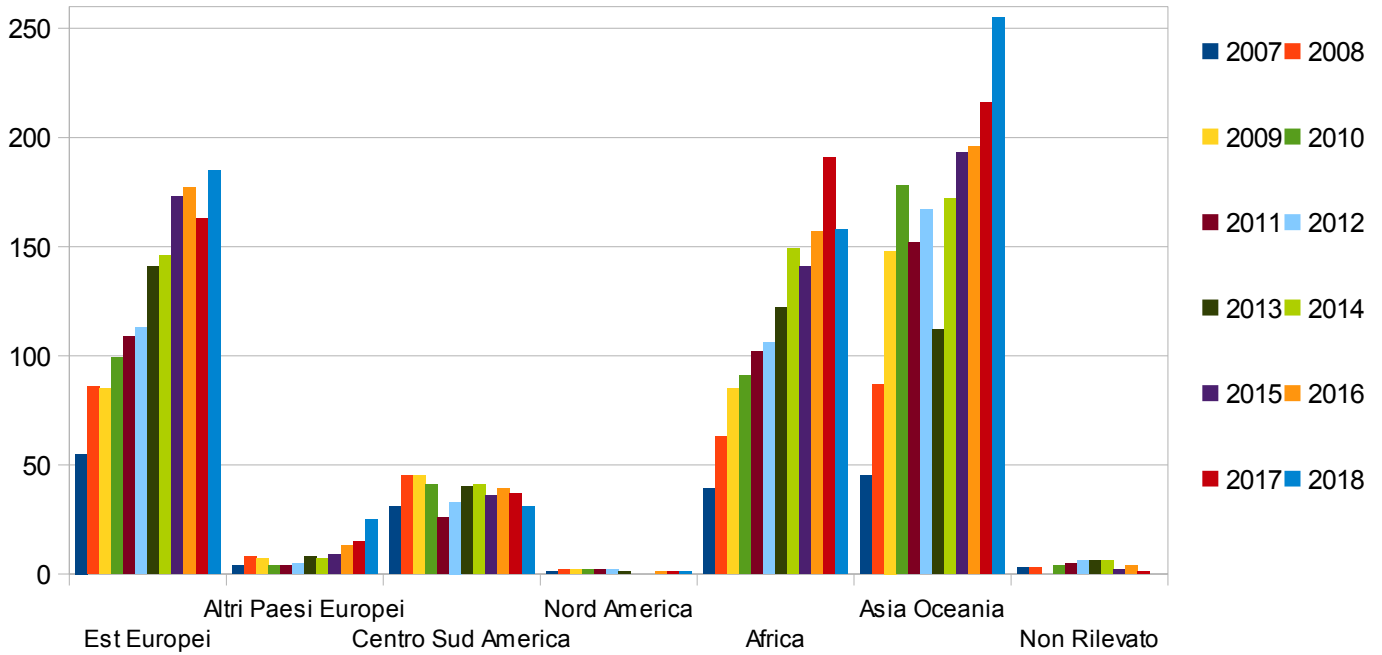
Utenti



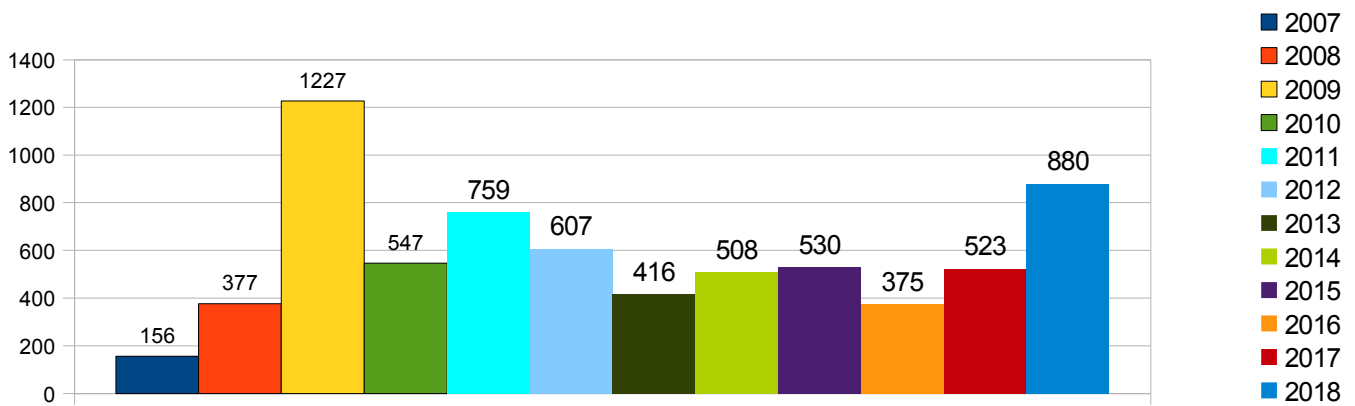
Utenti



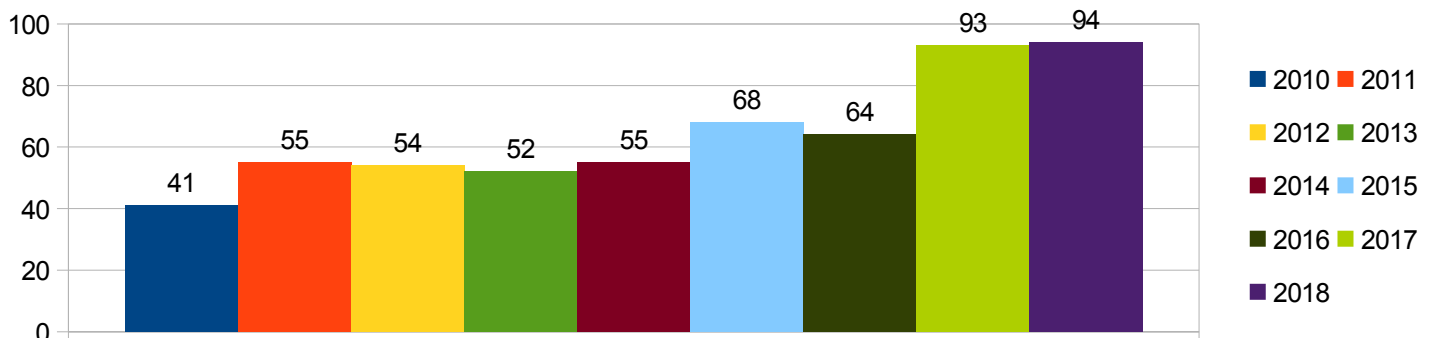
Aree Geografiche



Progetti di Prevenzione ed Educazione alla Salute



Richieste tramite sito internet



Percentuale di italiani sul totale utenti

2007	2008	2009	2010	2011	2012	2013	2014	2015	2016	2017
66,4%	55,9%	51,8%	51,4%	54,0%	49,9%	48,4%	51,3%	48,4%	49,0%	47,7%

2018

46,0%